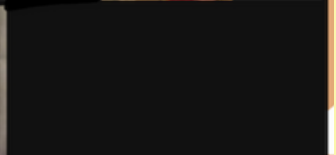
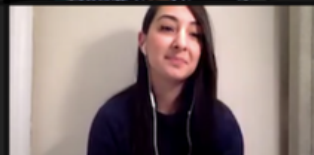
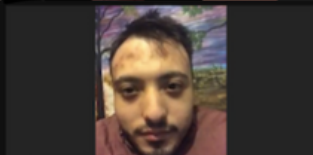
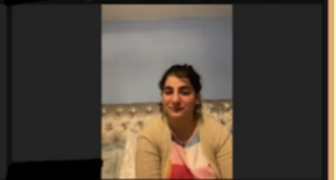
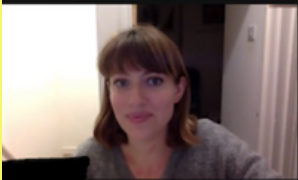
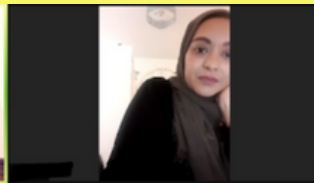
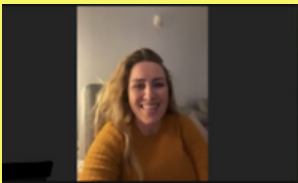




CAMDEN GIVING

# THE EQUALITY FUND REPORT YEAR 1 2021-2022



# INTRODUCTION

## INEQUALITY IN CAMDEN

In the borough of Camden there are huge inequalities at play. There is a vast amount of wealth present, and this sits side by side with residents living in poverty. Somers Town is the fifth poorest ward in the UK, and almost 1 in 3 children in the borough live in poverty, with the number eligible for free school meals steadily increasing. Constant construction and development mean residents' surroundings are permanently in flux, coupled with a sense that the opportunities these changes bring aren't available to them.

## THE EQUALITY FUND

The Equality Fund was created in 2021 to provide the flexible funding to grassroots charities and organisations in the borough who are working to reduce the inequalities already discussed. The fund supports organisations that actively bring together people from different backgrounds to strengthen communities, and by doing this the support positive wellbeing and enable peoples' voices who wouldn't otherwise be heard.

A key element of the Equality Fund is that the funding is unrestricted, giving the successful organisations autonomy and flexibility around how the money is used. Unrestricted funding is incredibly difficult to receive, particularly if you are a smaller, more grassroots organisation. However, without it, it is very difficult for organisations to be sustainable, and innovate to meet ever changing need.

## 2021 SNAPSHOT

8

PANELLISTS RECRUITED

9

ORGANISATIONS FUNDED

£270,000

TOTAL FUNDING GIVEN



WELLNESS ACTION ALLIANCE

# FUNDED ORGANISATIONS

## **THE WELLNESS ACTION ALLIANCE**

The Wellness Action Alliance supports parents, young people & families who are disadvantaged, BAME, or at risk of social isolation, poor health outcomes, high levels of deprivation or harm.

## **SOUTH CAMDEN COMMUNITY TRUST**

South Camden Community Trust supports the wellbeing, education and development of children and families facing high deprivation in Somers Town.

## **THE SAPPHIRE COMMUNITY GROUP**

Sapphire Community Group works to empower, equip, inspire, train, mentor, motivate and educate young people aged 10 to 30 years old.

## **THE CARAF CENTRE**

The Caraf Centre 's vision is that families of African and Caribbean heritage have the knowledge, skills and opportunities to achieve and live their best lives possible. Unfortunately the Caraf Centre had to close during the grant period so they only received half of the funding.

## **BRENT WOMEN'S ADVISORY RESOURCE CENTRE (BWARC)**

BWARC tackles inequalities experienced by women from ethnic minorities in Camden, through advice, training and employability outreach support services.

## **THE AUTISM HUB (ALAG)**

ALAG is a community organisation working in partnership with local authorities and the voluntary sector to highlight the needs of people with Autistic Spectrum Conditions (ASC).

## **INGESTRE COMMUNITY CENTRE**

Ingestre Community Centre provides affordable and free activities, events and clubs that meet the needs of its local community.

## **AFROPIC**

AfroPic uses the power of film, visual arts, and culture, to empower young people to tell authentic stories.

## **BLOOMSBURY FOOTBALL FOUNDATION**

Bloomsbury Football Foundation is a London-based grassroots football charity working with over 5,000 young people per week.

# SPOTLIGHT GRANTEES

## AFRO PIC: Simone Hayes

### THE MISSION

Simone founded Afro Pic productions to create digital activities for socially excluded young people to develop new skills, tackle the lack of BAME mainstream representation and help raise cultural awareness



### HOW DID THE EQUALITY FUND SUPPORT?

Simone applied to the Equality Fund to develop and design Comic Mania, as she felt strongly that **“every kid needs to see themselves as a hero”**. Comic Mania is an inclusive online creative writing platform which proactively promotes the diverse and authentic stories of children.

With the funding received, Simone was able to create the website and software for the platform, and over 100 children in Camden have already benefitted from using it. Simone was able to make connections with several Camden-based corporate organisations, such as Google and Hat Trick productions, who were able to provide valuable pro-bono support to move this work forward.

## THE AUTISM HUB (ALAG): Jill Bradford

### THE MISSION

ALAG provides valuable social and emotional support for autistic adults who do not have a learning disability but nonetheless can become vulnerable due to neglect and lack of support.

### HOW DID THE EQUALITY FUND SUPPORT?

ALAG applied to the Equality Fund to continue its work challenging and reducing inequality in Camden's autism community. The funding enabled ALAG to:

- Run CV writing, interview skills, and coding workshops in partnership with several Camden based businesses
- Offer free autism focussed therapy sessions for service users
- Free up ALAG to do more work raising awareness in partnership with other key stakeholders



**“The corporate funding as a result of Camden Giving was invaluable, as well as providing corporate volunteers who donated their time on bespoke and sustainable initiatives”**

# OTHER WAYS FUNDING WAS USED



**FOOTBALL  
PROVISION FOR  
GIRLS AND  
YOUNG PEOPLE  
WITH  
DISABILITIES**




**MENTORING  
CAREER  
SUPPORT FOR  
150 YOUNG  
PEOPLE**



**CREATING AN  
OFFICE BASE TO  
INCLUDE SAFE  
SPACE FOR  
WOMEN AND  
GIRLS TO ACCESS  
SUPPORT**



**REDUCING  
ISOLATION FOR 30  
ELDERLY PEOPLE  
LIVING WITH  
DEMENTIA**



**SUPPORT FOR  
FAMILIES  
DURING COVID,  
INCLUDING  
ZOOM SESSIONS  
AND ACTIVITY  
PACKS**

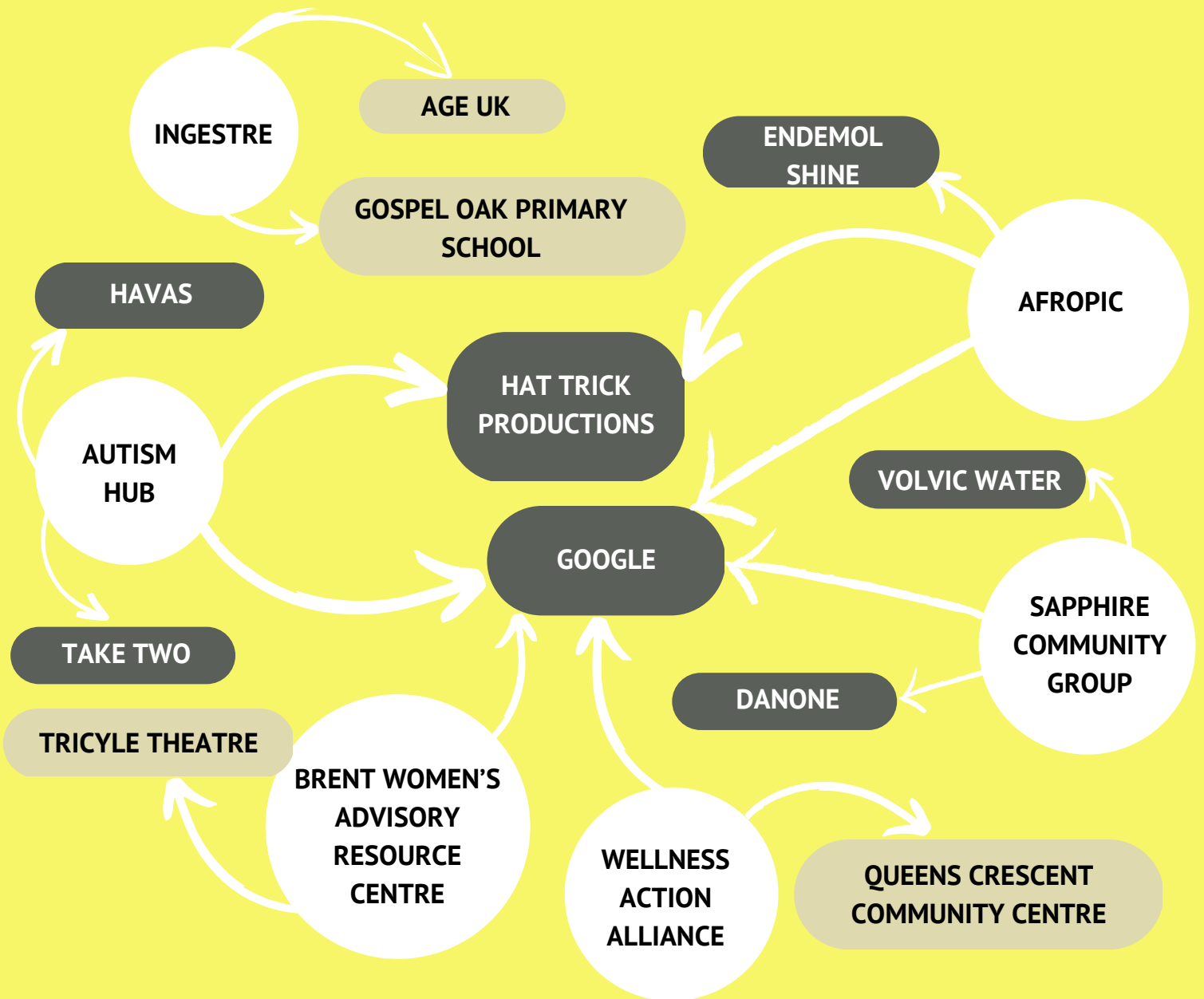


**SELF CARE  
SUPPORT FOR  
PARENTS FROM  
DISADVANTAGED  
BACKGROUNDS**

**Without Camden Giving funding, we wouldn't be able to set up an office or buy laptops. We now have an office space on 244A Kilburn High Road where beneficiaries (domestic abuse victims) can come and get help. During Covid we lost a lot of the beneficiaries as many of them don't have computers and internet and would not report if the perpetrator is there.**



# CONNECTIONS



At Camden Giving we take building connections seriously, meeting on a weekly basis as a team to see how we can draw together the different communities we are lucky enough to work with. Through bringing together Equality Fund panellists, grassroots organisations, and corporates based in Camden, amazing things can happen. This page is to share just some of connections that were made thanks to the Equality Fund.

# PANELLIST EXPERIENCES

“Working with my peers in my community from all different backgrounds makes me feel we are all getting a fair say and supporting one another.”

“It was such an enriching experience to learn about so many Camden charities striving to make a change in the community. Every session was pure food for the soul. Having such an amazing range of panellists to help on the journey of our decision made the process something I will carry with me forever.”

## CASE STUDY

### Markella Christofi

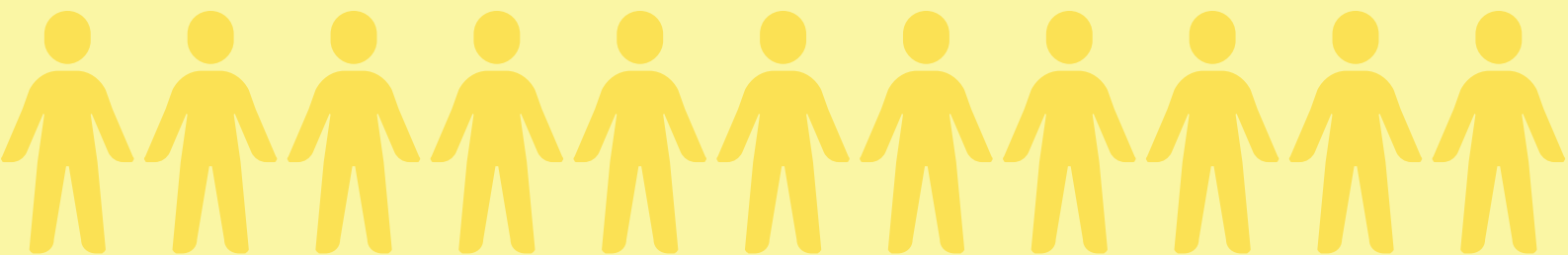


Markella has lived in Camden all her life, and is a proud Camden resident. This pride and love for Camden, particularly around the diversity of the borough, led her to apply to be a panellist for the Equality Fund. She was drawn to Camden Giving's participatory model: "One of the things I admire the most is that the board encourages Camden residents to collectively decide where the funding goes", and felt that awareness of inequality in the borough was too low and wanted to be part of work aiming to raise awareness of this issue.

Markella not only ended up being a hugely valued panellist, but she also ended up chairing the panel. This experience enabled her to:

- See first-hand the reach and impact of Camden Giving's participatory approach to funding, supporting marginalised communities in often critical moments of need.
- Understand the efforts taken to meaningfully scale the amazing work that Camden charities deliver every day to support their local communities.

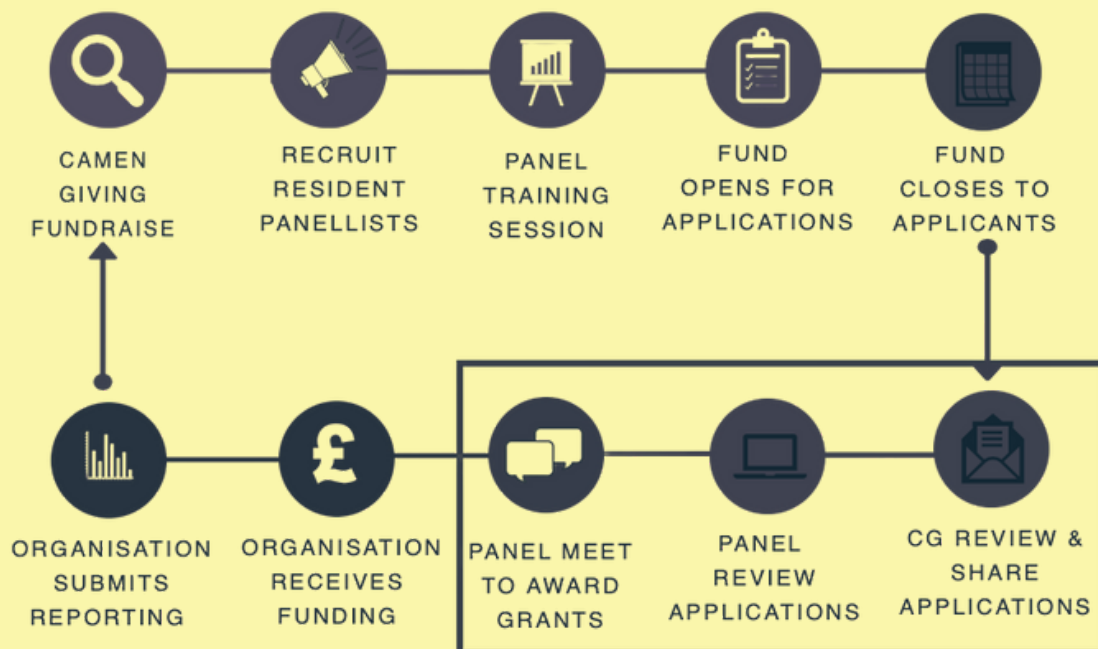
In her own words **"We need more awareness of grassroots led-organisations such as Camden Giving who bring a novel and egalitarian approach to charity."**



# A NOTE ON PARTICIPATORY GIVING

We've seen the power of participatory grant-making in practice, it's changing the way that people in Camden see themselves as agents of change. [This](#) video sums up how we operate and why we think participatory giving is important.

Currently 0.3% of grants given in Camden are awarded via participatory grant-making and we want to see that change in our borough and beyond. We've made our resources public [here](#) and you can pay our grant-makers to support your participatory work [here](#).



We also want to say a huge thank you to those we've partnered with to make this model work.





# LOOKING TO THE FUTURE

The first two years of the Equality Fund nurtured some incredible talent in the borough, which is why our approach for 2023 remains consistent. We are conscious that leaders in Camden have been forced to bounce from crisis to crisis and still continue their great work; from COVID, the murder of George Floyd and welcoming Afghan and Ukrainian Refugees, to the current cost-of-living crisis.

These challenging conditions make it more difficult for the leaders to have the space to innovate, as they are remaining in emergency mode. When there has been so much change, Camden Giving wants to offer consistency and stability in its approach, and we know if we only offer organisations small amounts of money, they will stay small.

The Equality Fund funding gives space and resource for such innovation to take place, enabling up-and-coming community leaders, supported by the We Make Camden Kit, to progress to a more established offering. We are excited to see what a new Equality Fund cohort will bring.

## THANK YOU

We wouldn't be able to facilitate this incredible work without the support of businesses and organisations in Camden who are willing to step up and be good neighbours.

Thank you all so much, not only for your financial contributions, but also for being so wonderful to work with.

